

Gour Mohan Sachin Mandal Mahavidyalaya

(Accredited Grade "B++" by NAAC)

P.O.- Bireswarpur, Pin Code - 743336

Dist.- South 24 Parganas, West Bengal

Mobile : 9733624547

From : **Dr. Abdullah Jamader Hasan, M.A., Ph.D.**

Principal

(Gold Medalist)

Ref. No.

Date

ANALYSIS OF TEACHERS FEEDBACK ON CURRICULUM, TEACHING LEARNING AND INFRASTRUCTURE

2022-23

The survey conducted online had 72 respondents. The IQAC is happy with the survey reports. Upon analysis, the following points are observed:

- 100% of the respondents are happy with the course in increasing knowledge, the balance between theory and practical modules and clarity of course objectives.
- However, 8.3% of the respondents are not satisfied with the timely coverage of the course. 98.3% of the respondents are happy with the college supporting the faculty in attending seminars.
- 94.4% of the respondents feel they are free to voice their opinion.
- 97.2% of the faculty are satisfied with their jobs.

RECOMMENDATIONS BY THE IQAC

1. The college should motivate the teachers to undertake research.
2. The IQAC is happy that the percentage of dissatisfaction with the job has come down.
3. The faculty should be geared towards NEP through workshops and reading materials.



Principal

G.M.S.M. Mahavidyalaya
Vill. & P.O.-Bireswarpur
Dist. - 24 Pargs (S), W.B.



IQAC Co-ordinator
GMSM Mahavidyalaya
Vill.+P.O.-Bireswarpur
Dist:24 pgs(S), PIN-743336

Teachers' Feedback on Curriculum, Teaching Learning, Infrastructure

2022-2023

Method-

The survey was conducted online in google form circulated in whats app. 72 respondents filled up the form. The form was devised by the IQAC according to NAAC guidelines and other survey parameters.

	Q1	Q2	Q3	Q4	Q5	Q6	Q7	Q8	Q9	Q10	Q11	Q12	Q13	Q14	Q15	Q16	Q17	Q18	Q19	Q20	Q21	Q22	Q23	Q24	Q25	Q26	Q27
Excellent	22	17	13	15	19	18	13	13	11	16	15	15	12	14	15	17	18	11	13	13	10	18	8	21	13	10	16
Good	41	40	37	41	34	37	41	35	32	35	36	38	41	30	31	34	36	24	30	34	37	38	34	32	36	34	26
Satisfactory	9	13	20	16	19	16	16	21	23	18	19	16	16	19	18	18	14	24	25	23	21	14	24	18	21	24	28
Poor	0	2	2	0	0	1	1	3	6	3	2	3	3	9	8	3	3	13	4	2	4	2	6	1	2	4	2



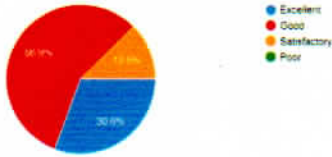
(Signature)

Principal
G.M.S.M. Mahavidyalaya
Vill. & P.O.-Bireswarpur
Dist. - 24 Pargs (S), W.B.

(Signature)

IQAC Co-ordinator
GMSM Mahavidyalaya
Vill. +P.O.-Bireswarpur
Dist:24 pgs(S), PIN-743336

Course/Syllabus increased my knowledge and perspective in the subject
72 responses



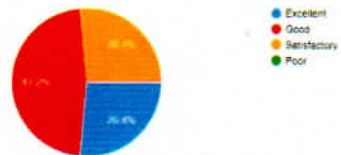
Books prescribed in the syllabus as reference are relevant, updated and appropriate
72 responses



Curriculum has balance between theory and practical
72 responses



Clarity of course objectives
72 responses



[Signature]
Principal
G.M.S.M. Mahavidyalaya
Vill & P.O.-Bireswarpur
Dist: 24 Pgs (S) W.B.



[Signature]
IQAC Co-ordinator
GMSM Mahavidyalaya
Vill.+P.O.-Bireswarpur
Dist:24 pgs(S), PIN-743336

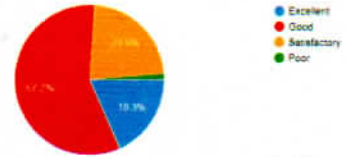
Program Outcomes of the syllabi is well defined

72 responses



Inclusion of advanced topics

71 responses



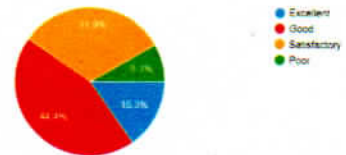
Curriculum has academic flexibility and fulfills student needs

72 responses




Timely coverage of syllabus possible within mentioned hours.

72 responses




Principal
G.M.S.M. Mahavidyalaya
Vill. & P.O.-Bireswarpur
Dist. - 24 Pargs (S), W.B.




IQAC Co-ordinator
GMSM Mahavidyalaya
Vill. +P.O.-Bireswarpur
Dist:24 pgs(S), PIN-746336

Curriculum has enhanced employability potential

72 responses



- Excellent
- Good
- Satisfactory
- Poor

Tests and examinations are conducted well in time

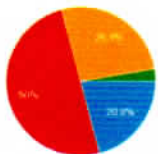
72 responses



- Excellent
- Good
- Satisfactory
- Poor

Opportunity for applied learning

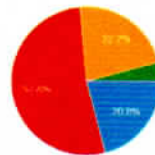
72 responses



- Excellent
- Good
- Satisfactory
- Poor

Ability to support higher learning

72 responses



- Excellent
- Good
- Satisfactory
- Poor

[Signature]
 Principal
 G.M.S.M. Mahavidyalaya
 Vill. & P.O.-Bireswarpur
 Dist. - 24 Pargs (S), W.B.



[Signature]
 IQAC Co-ordinator
 GSM Mahavidyalaya
 Vill.+P.O.-Bireswarpur
 Dist:24 pgs(S), PIN-743336

Integration of value and life skills like social, moral, environmental, ethical and gender norms:

72 responses



Library is equipped with different learning resources:

72 responses



Automation of library is satisfactory

72 responses



Procedure of procurement of books is fair and transparent

72 responses



[Signature]
Principal
G.M.S.M. Mahavidyalaya
Vill. & P.O.-Bireswarpur
Dist. - 24 Pargs (S), W.B.

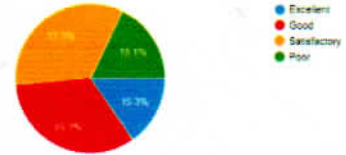


[Signature]
IQAC Co-ordinator
GMSM Mahavidyalaya
Vill.+P.O.-Bireswarpur
Dist:24 pgs(S), PIN-746336

Library timings are convenient
71 responses



Availability of ICT facilities
72 responses



The college encourages participatory decision making
72 responses



College encourages faculty members to innovate in the prescribed curriculum.
72 responses



Faculty members have the freedom to adopt technology in teaching?
72 responses



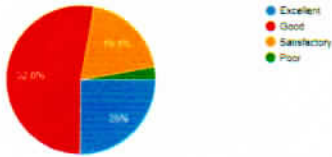
[Signature]
Principal
G.M.S.M. Mahavidyalaya
Vill. & P.O.-Bireswarpur
Dist. - 24 Pargs (S), W.B.



[Signature]
IQAC Co-ordinator
GMSM Mahavidyalaya
Vill.+P.O.-Bireswarpur
Dist:24 pgs(S), PIN-743336

College encourages faculty to invite experts from academia and industry for workshops and seminars.

72 responses



The college encourages research of the faculty

72 responses



The college supports the faculty in attending seminars

72 responses



The college ensures smooth career advancement of the teachers seeking promotion

72 responses



[Signature]
Principal
G.M.S.M. Mahavidyalaya
Vill. & P.O.-Bireswarpur
Dist. - 24 Pargs (S), W.B.



[Signature]
IQAC Co-ordinator
GMSM Mahavidyalaya
Vill.+P.O.-Bireswarpur
Dist.24 pgs(S), PIN-743336

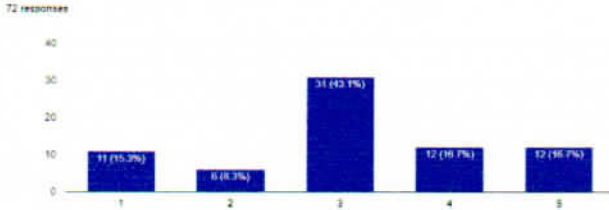
Faculty is free to express their opinions
72 responses



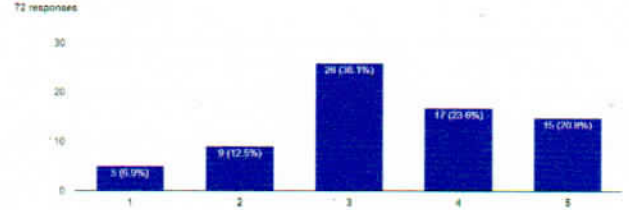
Are you satisfied with your job?
72 responses



Overall Marks On infrastructural facilities
72 responses



Overall Marks On administration
72 responses



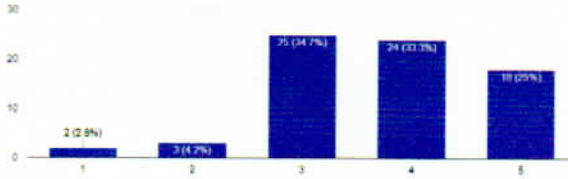
S. D. Das
Principal
G.M.S.M. Mahavidyalaya
Vill. & P.O.-Bireswarpur
Dist. - 24 Pargs (S), W.B.



Ranjana Das
IQAC Co-ordinator
GMSM Mahavidyalaya
Vill.+P.O.-Bireswarpur
Dist:24 pgs(S), PIN-743336

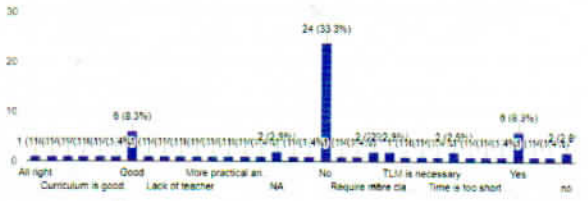
Overall Marks On curricular aspects and teaching learning

72 responses



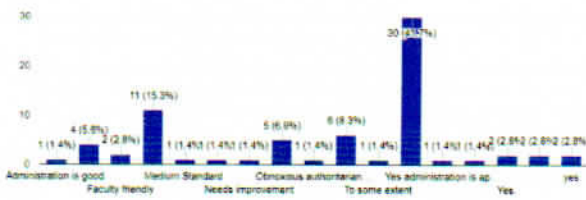
Any other feedback regarding curricular aspects and teaching learning

72 responses



Administration is approachable and faculty friendly.

72 responses



[Signature]
Principal
G.M.S.M. Mahavidyalaya
Vill. & P.O.-Bireswarpur
Dist. - 24 Pargs (S), W.B.



Rangini Arta
IQAC Co-ordinator
GMSM Mahavidyalaya
Vill.+P.O.-Bireswarpur
Dist:24 pgs(S), PIN-743336